



## **Broadway Shows**

### **Porgy & Bess**

**Scott #2768**

**Issued on July 14, 1993 in New York, NY**

**Designed by Wilson McLean**

Porgy and Bess, the George Gershwin musical was taken from the novel Porgy by DuBose Heyward. In the 1950s stage version, [Cab Calloway](#) plays the part of *Sportin' Life*, the drug dealing, fast talker who runs off with *Bess* to New York City. The part is played by [Sammy Davis Jr.](#) in the 1959 movie.

[William Warfield](#) played the title role of *Porgy* in the original stage version. [Sidney Poitier](#) played the part of *Porgy* in the 1959 movie opposite [Dorothy Dandridge](#). *Porgy* was modeled after an early Charleston, South Carolina character named Samuel Smalls who lived on Catfish Row, (Originally called Cabbage Row), during the early 1920s. Samuel Smalls is buried in a graveyard located at the James Island Presbyterian Church grounds on James Island just south of Charleston.

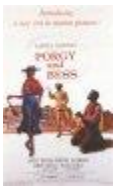
Cabbage Row, which was the scene of the opera and the movie, got its name from the peddlers who sold their vegetables from carts and windowsills. The area encompasses 89 to 91 Church Street and is a part of many of the local tours.

[\*A synopsis of the Play and a List of the Main Characters\*](#)

[\*Two Photos of Catfish Row as it Looks Today\*](#)

[\*Cast of Characters and Synopsis of the 1959 Movie\*](#)

[\*George Gershwin's Original Score from the Library of Congress\*](#)



[\*\*Promotional Poster for the 1959 Movie Porgy and Bess\*\*](#)  
**(Large File and download is a bit long - But worth it!)**